
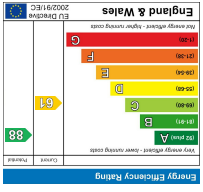
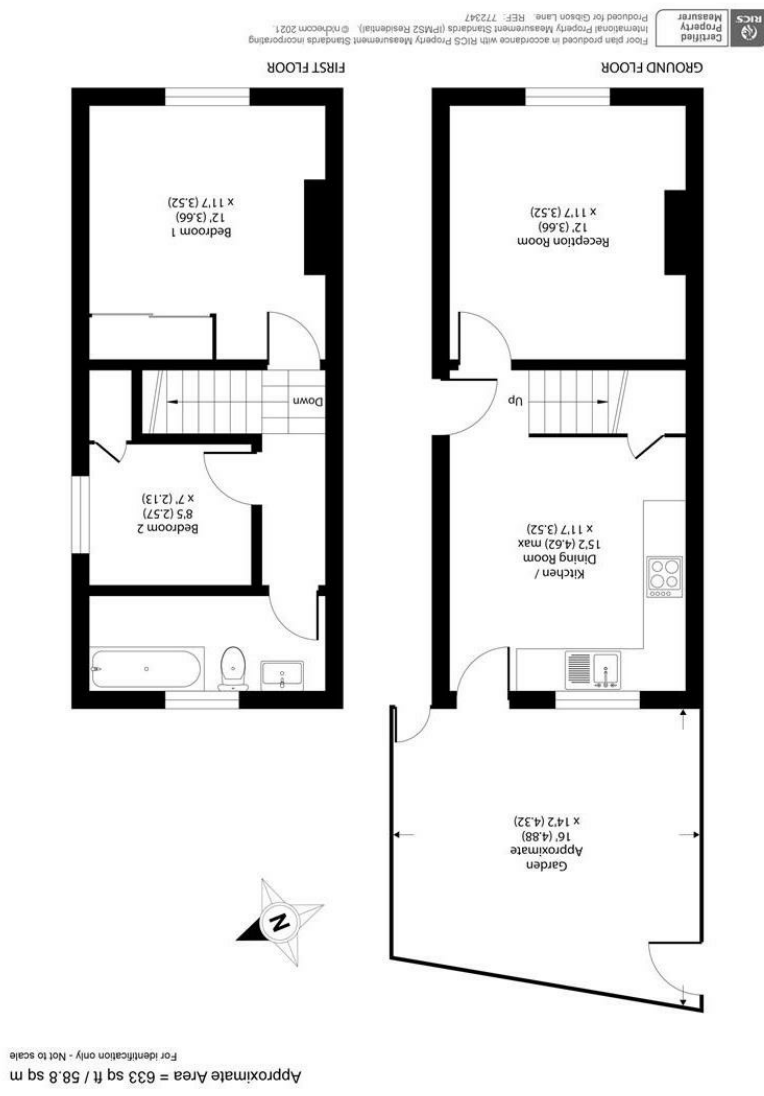


Important Information
 All appliances listed in these details are only 'as seen' and have not been tested by Gibson Lane, nor have we sought certification of warranty or service, unless otherwise stated. Measurements, areas and distances are approximate. Floor plans and photographs are for guidance purposes only and must not be relied upon for any purpose. These details are offered on the understanding that all negotiations are made through this company. Neither these particulars, nor verbal representations, form part of any offer or contract, and their accuracy cannot be guaranteed.

Environment Impact (CO ₂) Rating	Energy Efficiency Rating
	



34 Richmond Road
 Kingston upon Thames
 Surrey
 KT2 6ED
 www.gibsonlane.co.uk
 Tel: 020 8546 5444





Acre Road
 Kingston Upon Thames KT2 6ES



Acre Road

Kingston Upon Thames KT2 6ES

Guide Price £550,000

An immaculately presented two bedroom end of terrace house situated on this sought after road in North Kingston.

Description

An immaculately presented two bedroom Victorian end of terrace house with accommodation approaching 650sq ft arranged over two floors. The ground floor comprises front reception room with gas fire, built in storage and shutters to the front and a fully fitted modern eat in kitchen with stable doors leading out onto a private decked garden to the rear. To the upper floor there are two bedrooms and beautiful traditional style bathroom with roll top bath. Externally there is the added bonus of off street parking to the front and potential to extend into the loft (STNC)

Situation

Acre Road is a popular residential street ideally situated in the sought after North Kingston area. The property is conveniently positioned for Richmond Park, River Thames and Kingston station giving direct access into Waterloo and the A3 which serves both London & the M25. Kingston town centre with its array of shops, restaurants and bars is a short distance away. The standard of schooling in the immediate area is excellent within both the private and state sector.

Tenure: Freehold

Local Authority: Kingston Upon Thames

